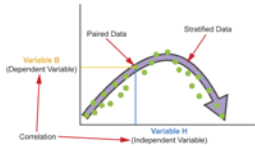


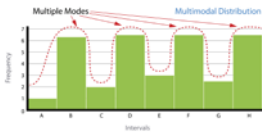
7QC TOOLS

eLearning courses designed to increase productivity and profits

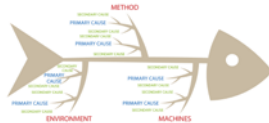
Scatter Diagrams



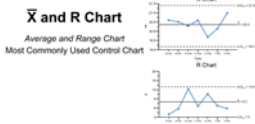
Histograms



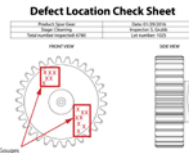
Fishbone Diagrams



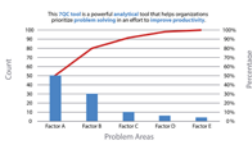
Control Charts



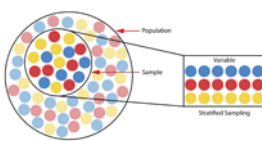
Check Sheets



Pareto Charts



Stratification



Learning made Simple, Visual, and Interactive

When producing parts or products, the ability to monitor and adjust manufacturing processes is necessary for companies to remain efficient and competitive. This is why quality control is so important. If products are to be made consistently to a required standard, the methods of manufacturing must be measurable, adjustable, and repeatable. In order to achieve these standards, logical, data driven approaches to finding acceptable solutions can be used, such as the 7QC tools, or the Seven Basic Tools of Quality Control. The 7QC tools are statistical tools that help individuals, organizations, and businesses resolve quality issues for products and processes.

Credit Hours **0.5**

*7QC Tools: Control Charts **Credit Hours 1**

Table of Contents

7QC Tools: Scatter Diagrams

- What are Scatter Diagrams?
- How to construct Scatter Diagrams

7QC Tools: Histograms

- Histograms visual menu overview
- What are Histograms?
- How to construct Histograms

7QC Tools: Fishbone Diagrams

- Fishbone Diagrams visual menu overview
- What are Fishbone Diagrams?
- How to use a Fishbone Diagram

7QC Tools: Control Charts

- What are Control Charts?
- Types of Control Charts
- Creating and Interpreting Control Charts
- How to Construct Control Charts

7QC Tools: Check Sheets

- Check Sheets visual menu overview
- What are Check Sheets?
- How to use a Check Sheet

7QC Tools: Pareto Charts

- Pareto Charts visual menu overview
- What are Pareto Charts?
- How to use Pareto Charts

7QC Tools: Stratification

- Stratification visual menu overview
- What is Stratification?
- How to use Stratification

